

SONAR TAG

Uni-Clip

S-LU12

Anti-theft protection



Designed to be attached onto temple arms from thin to medium, or to the end part of the high temple arms



Smart design - **ONE** single structure. Very easy to use in the attaching and the detaching.



S-LU12

Characteristics

Anti-theft protection Re-usable

It prevents shop lifting. It is particularly used for eyewear. One side can be personalized with logo, stickers, price adhesive labels or bar-codes.

Design

Smart, soft and small. It doesn't alter the design of the protected item nor hampers its wearing.

Structure: 1 piece

It can be used more than once (re-usable), therefore it allows to recover the investment cost. The structure is strong with soft protective lining.

Use

The **attaching** and the **detaching** are carried out by the authorized tool which allows a quick operation even with large quantities of frames.

Models

S-LU12

EAS Thecnologies

- Acousto-magnetic
- Electro-magnetic

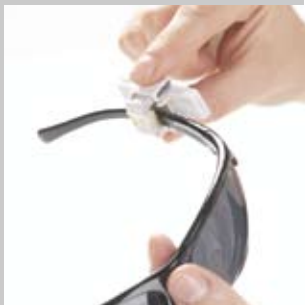
Authorized tool

To **attach** and **detach** the **S-LU12** Sonar tag.

It is available with fastener screws and incorporated technology as well.



Attaching



Insert the temple arm between the tag and the clip (the smaller part) turned towards the inner part.



Lay correctly the temple arm with the already mounted tag in the **A** housing (Attaching).



Turn the lever towards the opposite housing (**R**). Press it softly to the end, then bring it back again to the vertical position and take out the protected temple arm.

Detaching



Lay correctly the temple arm with the tag in the **R** housing (Detaching).



Turn the lever towards the opposite housing (**A**). Press it softly to the end, then bring it back again to the vertical position.